

FOCUS ON TRANSITION



Mr. George Ogalo (Former National Director) handing over the baton to Mr. Simon Kande (Incoming National Director)

The 48th FOCUS Kenya AGM was held on 24th April 2021. It marked the second AGM in a row where the stakeholders could not meet physically due to the pandemic. We had an attendance of around 500 students, associates and ministry partners. This AGM was one of the last acts of service of the outgoing National Director, Mr. George Ogalo and the introduction of Mr. Simon Kande as the incoming National Director.

George Ogalo served as the National Director for seven years and has been instrumental in leading FOCUS to great heights. His tenure will be marked by the launch of the HATUA campaign, the diversification of ministry and expansion to new horizons such as in Garissa, social transformation, Hesabika Trust, strengthening of Church partnerships



among many other strategic initiatives. His faith, wisdom, and leadership have impacted many within the FOCUS family. We pray that the Lord will lead and guide George in his new ministry work with International Fellowship of Evangelical Students.

Simon Kande, the incoming National Director, comes to us from the Nairobi Baptist Church where he is transiting as a Pastor in charge of Administration and Operations. He has previously served with FOCUS Kenya in various capacities, with his last role as the Deputy National Director. Simon is married to Rose Kande and they are blessed with three children: Baraka, Sifa, and Neema. We commend Mr. Kande to the Lord and wish him all the best as he takes up his new role as the National Director of FOCUS Kenya.



HATUA: STONE LAYING



About 4 years ago, FOCUS began to execute the need to match the growth of the ministry with infrastructure necessary to accomplish its Mission and Vision. This led to the birth of the HATUA campaign, that will see the construction of FOCUS Kenya Students' Training and Development Centres to serve the seven regions. The former National Director, George Ogalo, commenting during the HATUA stone laying function in Nairobi, emphasized the function of transformation of many lives facilitated by the construction of the Centers. The stone-laying event that was held on 20th April was marked by a feeling of joy, excitement and celebration. To enable us complete the first phase of the superstructure and two usable floors, there will be a HATUA Fundraising event on 5th June 2021 from 9:00 am to 10:30 am via Zoom ([Register Now](#)).

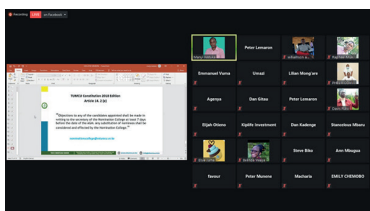


This investment goes a long way to ground more Students and associates in their capacity for effective Christian Living in the institutions of higher learning, the Church and society. You can partner with us in this work of faith by giving towards the HATUA campaign and praying for the projects.



REGIONAL ROUND-UP

CU TRANSITIONS



TUM CU during an online meeting

It is now more than a year since Christian Unions' (CUs) normal operations were interrupted by the COVID-19 pandemic. Amazingly, the CUs have had tremendous growth in Digital Ministry during this period. With the help of FOCUS Staff in the regions, many students have embraced the virtual platforms for fellowships and other CU programs.

However, the new normal came with its difficulties. One of the challenged activities last year was CUs' leadership transitions. This is attributable to the interruptions of physical gatherings and limited virtual tools that could conveniently facilitate nominations and handing over events. That translated to delays and postponement of several transitions.

This year, the CUs are gradually surmounting the challenges. As the digital infrastructure grows, many of them have conducted online nominations and AGMs. Various CUs did their nominations online using google forms. They also instituted an electoral college to facilitate the selection of new leaders virtually. The new leaders took over during their AGM .

This has been the case for a number of CUs. We pray for God's grace upon the new leaders in various CUs.

EVANGELISM



Evangelism is not only a key pillar in the FOCUS strategic plan, but it is also a biblical command to all believers. Even with the pandemic, this call is still very relevant. In fact, its urgency has only been made more apparent.

FOCUS Kenya has made sure that this continues despite the challenges around us. We have mobilized students to create campaigns and

initiatives that reach their fellow students virtually, and where practical even physically. KMTC Nyeri is an example of a CU that has implemented some of these strategies. After the partial lockdown was put in place, the students who remained in school endeavored to reach out to their fellow students during a 'coffee at WiFi.' The CU prepared coffee and shared it with other students at the school "Wi-Fi" hotspot, and in the process, the gospel was shared.

KMTC Nyeri students sharing the gospel during a campaign dubbed 'coffee at WiFi'.



LEADERSHIP DEVELOPMENT



CIT CU leaders during a leaders training

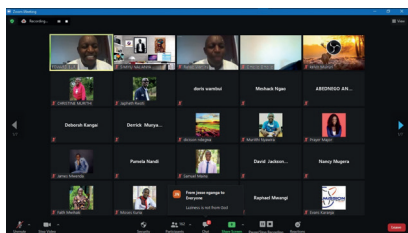
Whether leaders are born or made might sound like a cliché to many. However, either way, the need for training is to equip the leaders for the tasks they are to handle is undeniable. Over the 48 years of its existence, FOCUS Kenya has committed to training leaders for their functions in the CU leadership roles and future leadership positions.

This quarter of the year, FOCUS has conducted leadership training in various institutions such as Coast Institute of Technology, KMTC Nyeri, KMTC Msambweni, and Chuka University CU. FOCUS Associates were also involved as trainers and mentors in these trainings.

Mt Kenya Leadership Summit

Many students and associates participated in the Mt Kenya Leadership summit held this year. It was attended by 246 participants via zoom while 637 others followed on YouTube, and 700 others followed on Facebook.

Topics covered in the Summit were Shining light in Darkness-Reflections from the life of Daniel, Leadership and Politics, Personal Leadership, the Art of Stewardship, and Leadership in the Marketplace. The videos are still available on YouTube and Facebook ([Click here to watch](#)).



Mount Kenya Leadership Summit



Massai Mara University CU out going leaders Celebrating during the AGM



Leaders at KMTC Msambweni posing for a photo after leadership training



Leaders training at Chuka University Christian Union.



Cooperative University CU receiving the new leadership during the AGM



Technical University of Mombasa CU witnessed the transition of its longest serving leaders

DISCIPLESHIP

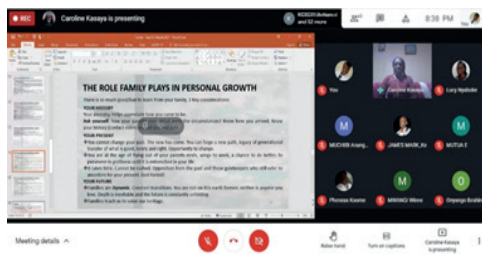


Discipleship has been one of the areas of Christian ministry that has been seriously affected. From Bible study small groups, discipleship programs such as Anza-FyT, BEST-P to Sunday gatherings have not been held consistently.

Though the CUs were able to adapt to online platforms, the longing for sharing life with each other could not be quenched. We thank God that there is a resumption of physical gatherings that will allow FOCUS Staff to share their lives more with the students.

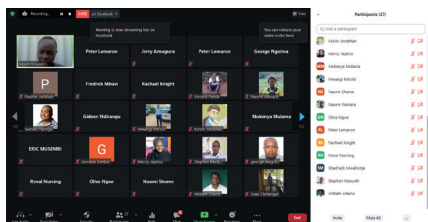


Cooperative University CU Sunday Service. I

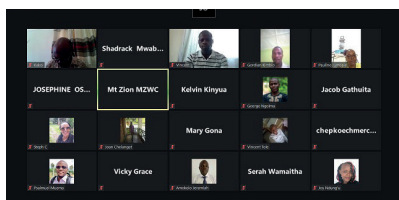


Midweek fellowship via Google Meet for Karatina Main Campus Christina Union

ASSOCIATES ACTIVITIES



Mombasa Associates Entrepreneurship Forum



Mombasa Associates Prayer Meeting

The FOCUS Associates are a critical resource for the student ministry through their giving of finances, time, experience and professional services to the students. FOCUS acknowledges this fact and has continued to mobilize associates from all over the country and for involvement in the ministry.

FOCUS is not only keen to see associates plug in into students' ministry, but also to see them equipped for ministry in the various spheres. It is for this reason

that, FOCUS Associates Branches are established across the country to help in facilitating these activities. Mombasa Associates managed to have an online prayer fellowship with an attendance of 26 participants and a virtual Entrepreneurship Forum attended by 27 participants. Isiolo branch had their inaugural meeting with 11 associates in attendance. To find a branch near please contact your regional office ([Know your Region](#))

Associates Ministry Director 0724 997 051

1. Central Rift | Nakuru | Narok | Naivasha | Nyahururu | **0724 997 057**
2. Mt. Kenya | Nyeri | Meru | Embu | Chuka | Nanyuki | **0728 067 067**
3. Pwani Region | Mombasa | Voi | Kilifi | Malindi | Mtwapa | **0724 997 056**
4. Western Region | Kisumu | Kakamega | Kisii | Kericho | **0724 997 059**
5. North Rift | Eldoret | Kitale | Kapenguria | Lodwar | **0724 997 058**
6. Northern Nairobi | Murang'a | Juja | Thika | Kitui | Kasarani | Kiambu | **0719 761 271**
7. Southern Nairobi | CBD | Kikuyu | Kitengela | Ngong' | Machakos | **0719 761 371**



Virtual Associates Conference

Theme: Towards a better nation,
My contribution matters

10th
July '21

9:00am
to
4:00pm

Ksh.
500

Contact Us:

www.focuskenya.org

associates@focuskenya.org



Virtual Conference 2021

13th - 23rd Nov

Theme: The Gospel transforming a dynamic world
Gospel of Luke

Contact Us:

www.focuskenya.org

commission@focuskenya.org



FOCUS KENYA

HQ FOCUS Centre Kasarani
P.O BOX 781-00618 Ruaraka, Nairobi
0722 564 851 | 0733 614 340 |
focus@focuskenya.org | www.focuskenya.org



@ FOCUS KENYA